

CERTIFIED LAND CORNER RECORDATION

DESCRIPTION OF CORNER EVIDENCE FOUND, AND ORIGINAL RECORD (if known)

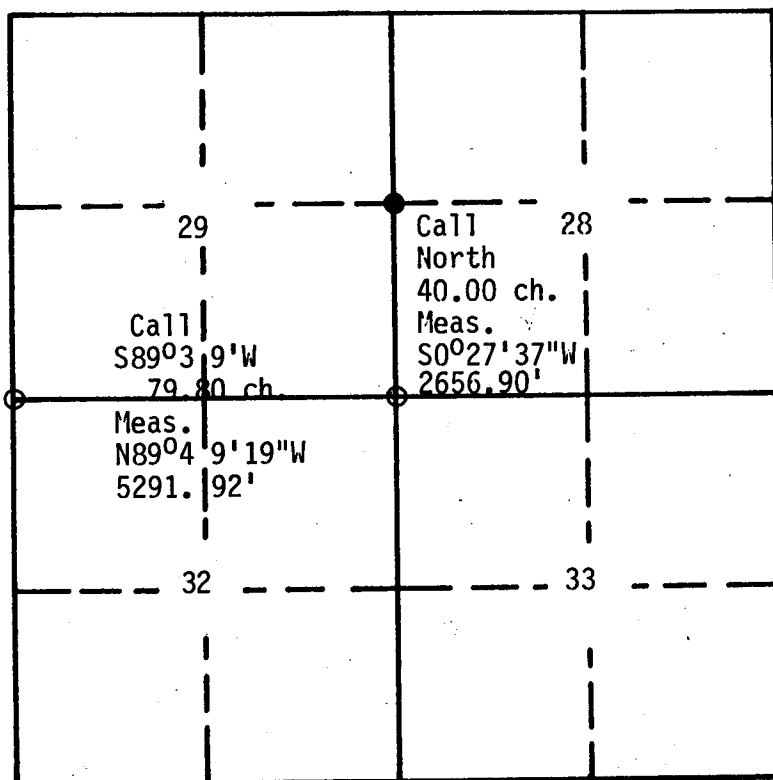
Record: Set a granite boulder, 15"x8"x5", for 1/4 corner

DESCRIPTION OF MONUMENT AND ACCESSORIES ESTABLISHED TO PERPETUATE THE ORIGINAL LOCATION OF THIS CORNER:

Found: ^a Set, decomposing, coarse-grained, sand stone, 8"x4", 8" above ground; 6.5' east of old fence corner post and north/south fenceline.

Set: Nothing

SKETCH, WITH COURSE AND DISTANCE TO ADJACENT CORNER IF DETERMINED IN THIS SURVEY. (May Sketch or Paste Reproduction on Reverse Side.)



Section 29 T: 16N R: 66W

- corner filed--this form
- controlling corner

DETAILS

Basis of bearings taken is from solar observations at Latitude 41°19'31".

Surveyed: 12/1/83
Job No. 83115.000

I, John I. Dolinar certify that I have carefully performed or reviewed the work done on the diagrammed corner as reported on this recordation form and approve the same.

Green River Wyo

John I. Dolinar
Signature of Surveyor

2608
Registration No.

STATE OF WYOMING,
Office of Clerk and Recorder,
County of Laramie

728839

This "corner record" was filed for record on the 10 day of Jan, 1984, was noted on the cross-index plat and is assigned page No. _____, in book No. _____.

Jan C. Whitehead
County Official

Cross Index No. _____ T. _____ R. _____ Mer.
 _____ T. _____ R. _____ Mer.
 _____ T. _____ R. _____ Mer.
 _____ T. _____ R. _____ Mer.
 _____ T. _____ R. _____ Mer.
 _____ T. _____ R. _____ Mer.

lm

T-9 16-66